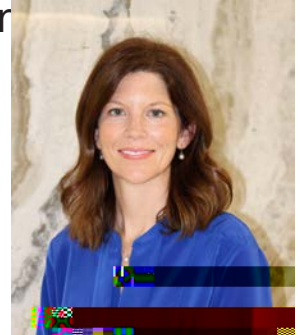




Ethical Differences Among Generations

By Ashley Salaiz, Ph.D.
Assistant Professor of Management;
Associate Director, Center for Ethics



Ashley Salaiz

INSIDE

PAGE 2

- < What is the Role of a Professor?
- < Ethical Leadership: The Silver Lining in a Tumultuous Year


PAGE 3

- < Millennials vs. Baby Boomers

Generational Ethics

By Edgel "Ed" Lester, Chair, The Center for Ethics;
Shareholder, Carlton Fields, P.A.

Edgel "Ed" Lester



Top row from left to right: Director of Center for Ethics Robert Marley, Associate Director of Center for Ethics Ashley Salaiz, Eric Bingham, Dior Rutherford and Sara Mazzola. Middle row from left to right: Deletha Hardin, Carter Hardy, Eric Freundt and Laine Kenny. Bottom row from left to right: Omar Lopez, Aaron Wood and Dominique Trottier

The Center for Ethics Fall Speaker Series explored student and faculty perceptions regarding the role of a professor. Delivered in a real-time webinar broadcast on Oct. 28, four faculty and four students debated the role of the professor, along with over 150 Tampa Bay students, faculty and community members interactively participating via Zoom Q&A.

Topics of debate ranged from the impact of student evaluations on faculty teaching, the role of tenure, how supportive faculty should be of students and a plethora of questions from the audience. The event helped students and faculty learn more about each other, hopefully fostering a better cross-

COVID-19 Haiku

Everyone lock down
Safety first, mentally drained
I do for others

CENTER FOR ETHICS ADVISORY BOARD

Sandra Clawson, Ph.D.
Director, TECO, an Emera Company

C. Lee Essrig
Principal, Lee Essrig and Associates LLC

Brent Fernandez
Program Manager, Axon

William "Bill" H. Geiger
Retired, formerly Corporate Counsel and Group VP-Compliance
Transamerica/AEGON

F. Frank Ghannadian, Ph.D.
Dean, Sykes College of Business
The University of Tampa

Mark Harmon
HR/Training Risk and Control, Citigroup

John Hindman
CEO, H&A Consulting Partners LLC

Christine Dever Homack
Principal, Accountabilities Consulting Services LLC

Jordan Hurwitz
Staff Assistant I, Sykes College of Business
The University of Tampa

Edgel "Ed" Lester
Chair, Shareholder, Carlton Fields, P.A.

Robert Marley, Ph.D., CPA
Director, Center for Ethics
Associate Professor of Accounting
The University of Tampa

Ashley Salaiz, Ph.D.
Associate Director, Center for Ethics
Assistant Professor of Management
The University of Tampa

Albert Verile
Founder, Sharpline Investigations LLC